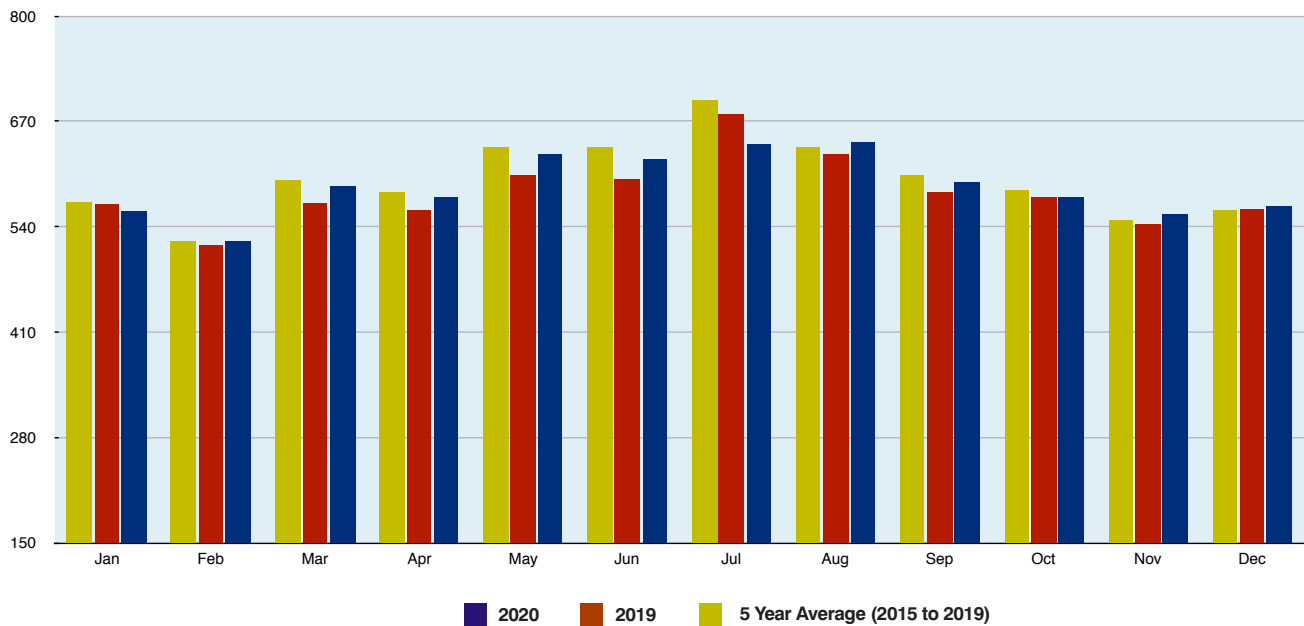


MONTHLY CONSUMPTION INFORMATION



TOTAL MONTHLY CONSUMPTION (MEGALITRES)



MONTHLY CONSUMPTION (MEGALITRES)

Month	2019	2020	5 Year Average (2015-2019)
January	566.5	558.7	561.51
February	517.1	522.7	532.33
March	569.2	595.3	594.69
April	561.0	575.4	590.94
May	604.2	630.3	635.32
June	599.3	622.5	643.39
July	678.8	642.4	686.96
August	629.8	643.3	660.90
September	583.5	594.8	616.23
October	576.1	575.6	601.77
November	543.4	555.7	570.01
December	562.1	565.2	568.78
Annual Total	6,991	7,076	7,263